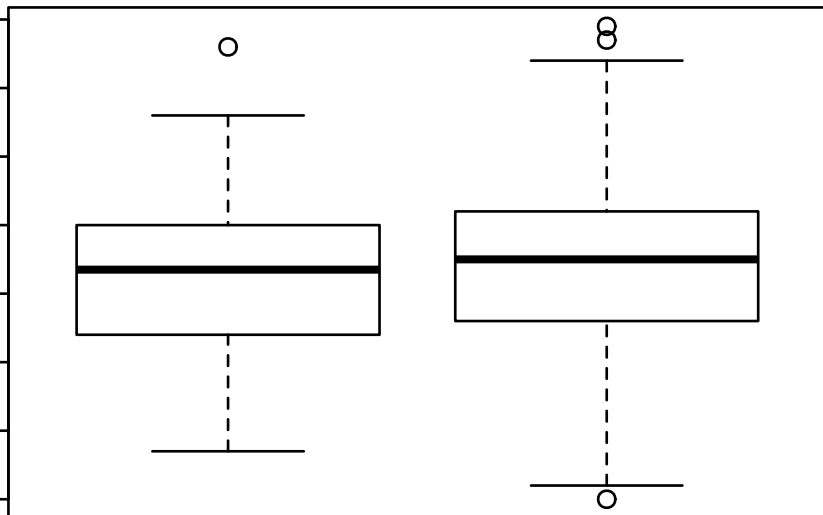


# YEAR\_OF\_TOBACCO\_SMOKING\_ONSET

YEAR\_OF\_TOBACCO\_SMOKING\_ONSET

2000  
1990  
1980  
1970  
1960  
1950  
1940  
1930



13Q GAIN MUTATED  
(n=26)

13Q GAIN WILD-TYPE  
(n=250)

Wilcoxon test  $P = 0.217$