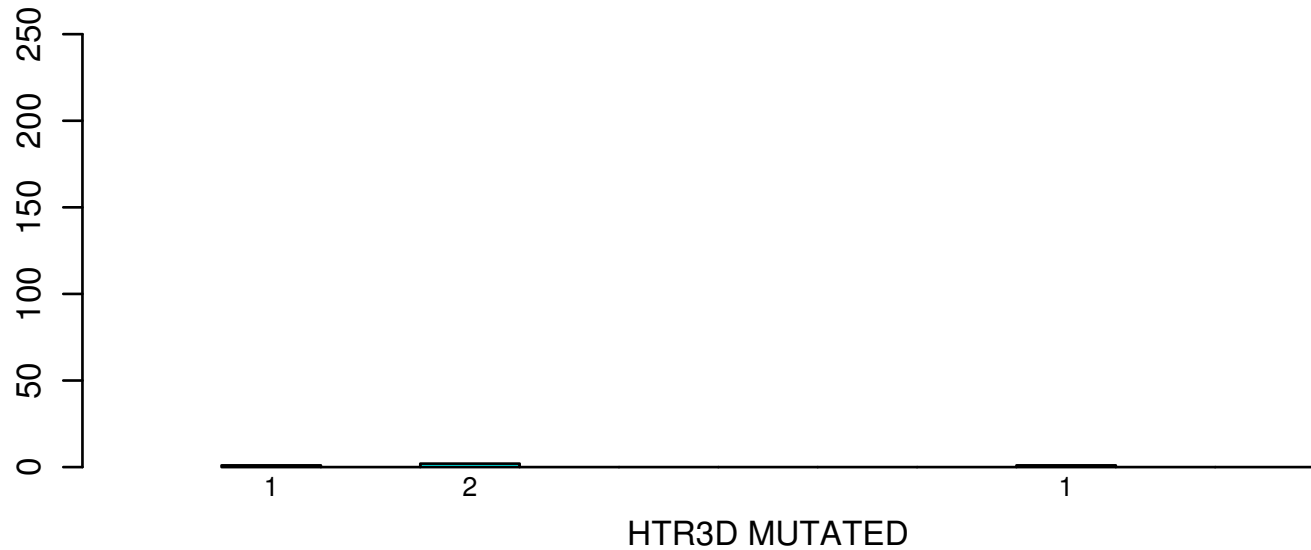
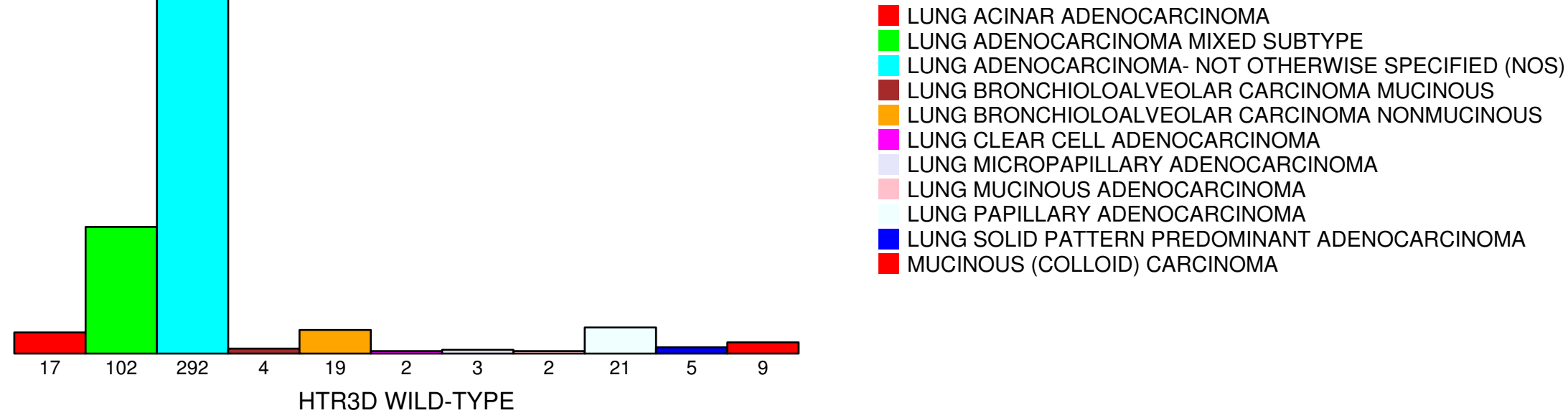


number of cases



## HISTOLOGICAL\_TYPE



- LUNG ACINAR ADENOCARCINOMA
- LUNG ADENOCARCINOMA MIXED SUBTYPE
- LUNG ADENOCARCINOMA- NOT OTHERWISE SPECIFIED (NOS)
- LUNG BRONCHIOLOALVEOLAR CARCINOMA MUCINOUS
- LUNG BRONCHIOLOALVEOLAR CARCINOMA NONMUCINOUS
- LUNG CLEAR CELL ADENOCARCINOMA
- LUNG MICROPAPILLARY ADENOCARCINOMA
- LUNG MUCINOUS ADENOCARCINOMA
- LUNG PAPILLARY ADENOCARCINOMA
- LUNG SOLID PATTERN PREDOMINANT ADENOCARCINOMA
- MUCINOUS (COLLOID) CARCINOMA

Fisher's exact test P = 0.196