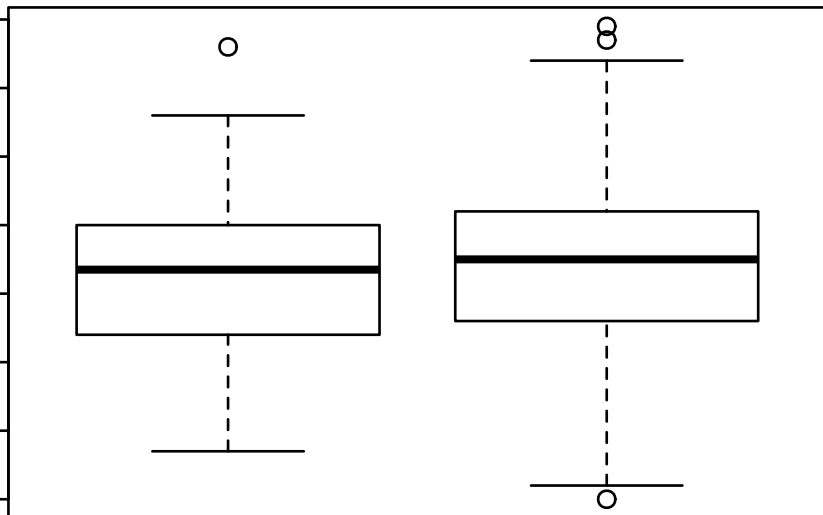


YEAR_OF_TOBACCO_SMOKING_ONSET

YEAR_OF_TOBACCO_SMOKING_ONSET

2000
1990
1980
1970
1960
1950
1940
1930



13Q GAIN MUTATED
(n=26)

13Q GAIN WILD-TYPE
(n=250)

Wilcoxon test $P = 0.217$